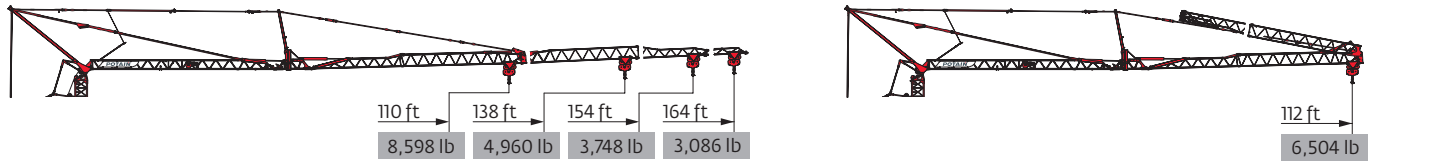


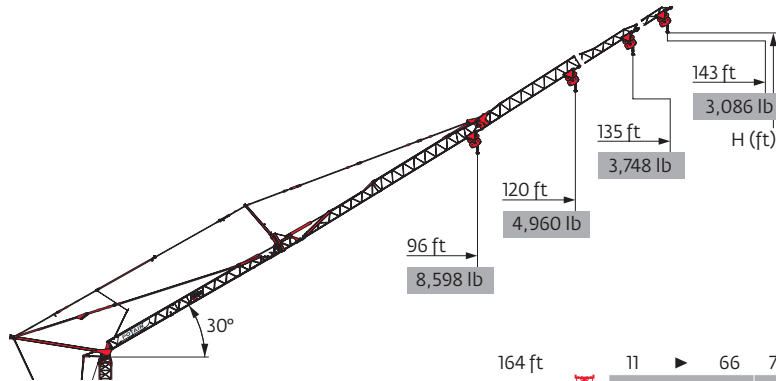
i North American market utilizes 12 counterweight slabs, please consult factory for dimensions information.

Load curves



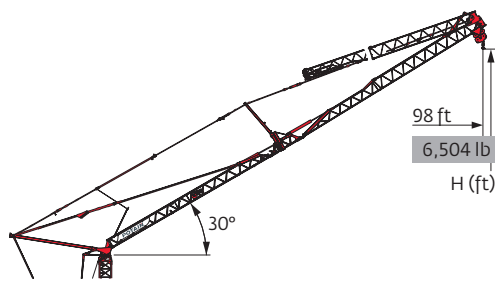
164 ft	11	▶	43	46	52	59	66	72	74	75	79	85	92	98	105	112	118	125	131	138	144	151	157	164	ft		
▲▲▲			17,637	16,314	13,669	11,905	10,362	9,259	-	8,598	8,157	7,496	6,834	6,173	5,732	5,291	4,850	4,519	4,189	3,968	3,748	3,527	3,307	3,086	lb		
											8,818	8,598	8,157	7,496	6,834	6,173	5,732	5,291	4,850	4,519	4,189	3,968	3,748	3,527	3,307	3,086	lb
154 ft	11	▶	46	49	52	59	66	72	79	80	82	85	92	98	105	112	118	125	131	138	144	151	154	ft			
▲▲▲			17,637	16,314	14,991	13,007	11,244	10,141	9,039	-	8,598	8,157	7,496	6,834	6,283	5,732	5,401	4,960	4,630	4,409	4,079	3,858	3,748		lb		
											8,818	8,598	8,157	7,496	6,834	6,283	5,732	5,401	4,960	4,630	4,409	4,079	3,858	3,748	lb		
138 ft	11	▶	50	52	59	66	72	79	82	85	88	89	92	98	105	112	118	125	131	138				ft			
▲▲▲			17,637	16,755	14,330	12,566	11,244	10,141	9,480	9,039	-	8,598	8,378	7,716	7,055	6,504	6,063	5,622	5,291	4,960					lb		
											8,818	8,598	8,378	7,716	7,055	6,504	6,063	5,622	5,291	4,960					lb		
110 ft	11	▶		61	66	72	79	82	85	89	92	98	105	108	110										ft		
▲▲▲				17,637	16,094	14,330	13,007	12,346	11,685	11,244	10,803	9,921	9,039	-	8,598											lb	
														8,818	8,598										lb		

164 ft	11	▶		50	52	59	66	72	79	85	88	92	98	105	112										ft	
▲▲▲				17,637	16,755	14,330	12,566	11,244	10,141	9,039	-	8,378	7,716	7,055	6,504											lb
											8,818	8,378	7,716	7,055	6,504										lb	



▲▲▲		164 ft	154 ft	138 ft	110 ft
H+3	ⓘ	200	195	-	-
H+2	ⓘ	190	185	-	-
		180	175	166	151
H+1		171	165	156	141
		161	156	147	132
H+0		151	146	137	122

164 ft	11	▶	66	72	79	85	92	98	105	112	118	125	131	138	143	ft
▲▲▲			8,818	7,716	7,055	6,283	5,732	5,181	4,740	4,409	4,079	3,748	3,527	3,307	3,086	lb
154 ft	11	▶	70	72	79	85	92	98	105	112	118	125	135			ft
▲▲▲			8,818	8,598	7,716	6,834	6,283	5,732	5,291	4,850	4,519	4,189	3,748			lb
138 ft	11	▶		77	85	92	98	105	112	120						ft
▲▲▲				8,818	7,716	7,055	6,504	5,952	5,512	4,960						lb
110 ft	11	▶				94	96									ft
▲▲▲						8,818	8,598									lb



▲▲▲	164 ft
▲▲▲	154 ft
▲▲▲	138 ft
H+2	152
H+1	142
	133
H+0	123

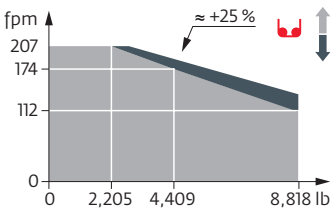
164 ft	11	▶		77	79	85	92	98								ft
▲▲▲				8,818	8,598	7,716	7,055	6,504								lb

Mechanisms

480 V - 60 Hz													hp	kW
	33 LVF 20 Optima	fpm	10	52	112	174	207	5	26	56	87	103	29.5	22
		lb	8,818	8,818	8,818	4,409	2,205	17,637	17,637	17,637	8,818	4,409		
	5 DVF 5	fpm	49 - 98 - 128 (4,409 → 17,637 lb) 49 - 98 - 180 (441 → 4,409 lb) 49 - 98 - 230 (0 → 441 lb)									5.4	4	
	RVF 161 Optima+	rpm	0 → 0.8									7.5	5.5	
	TVF 124	fpm	82									2 x 4	2 x 3	

IEC 60204-32	
480 V (+6% -10%) 60 Hz	31 → 19 kVA 35 → 22 kVA

33 LVF 20 Optima



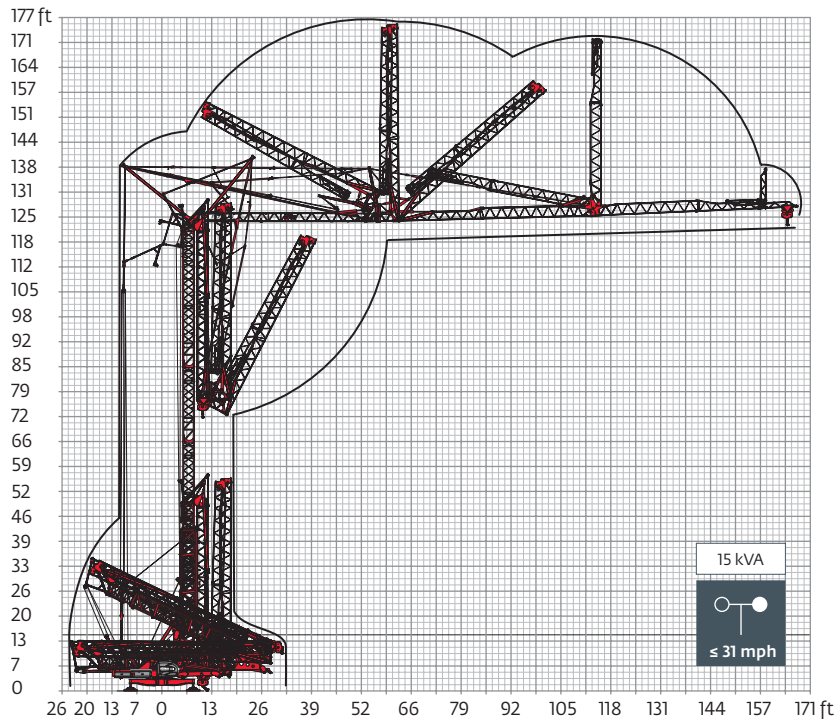
Power Requirements

- 480V/60HZ - 65A max
- *480 V phase to phase
- *277 V phase to Ground
- *80A fuse protection
- *WYE connection
- *NO DELTA CONNECTION

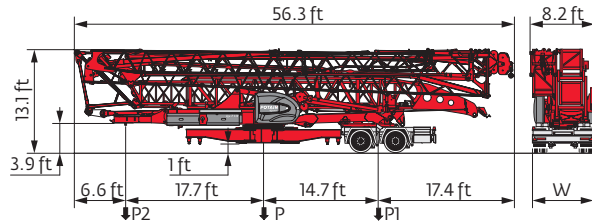
- Minimum Generator 70kW
- Supply Cable
- *3 hot + ground
- *No neutral
- *4 AWG wire

- Transformer
- *No open Delta connection

Erection

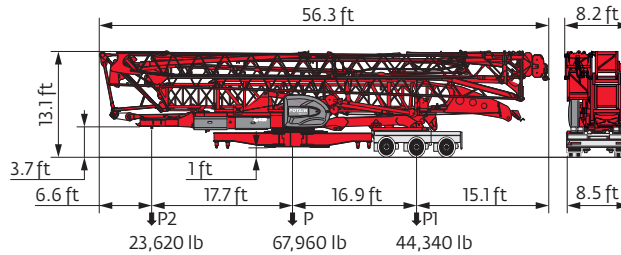


Transport



	mph	W (ft)	P (lb)	P1 (lb)	P2 (lb)
SL121/S215M	15.5	7.9	66,359	42,549	23,810

NORTH AMERICAN HIGHWAY AXLE



Rocky Mountain Crane
 208-500-0101
www.rockymtncranes.com

- R Rear slewing radius
- i Consult us
- Reactions in service
- Reactions out of service
- ▲ Weight without load, without ballast, without transport axes, with max. jib and standard height
- Total ballast weight
- Standard equipment
- Options
- Hoisting
- Trolleying
- Slewing
- Travelling
- kVA Required power
- ⌚ Power Control Function: winch speeds adapted to the available power

⚠ This commercial document is not legally binding. For any technical information, please refer to the corresponding instructions.

